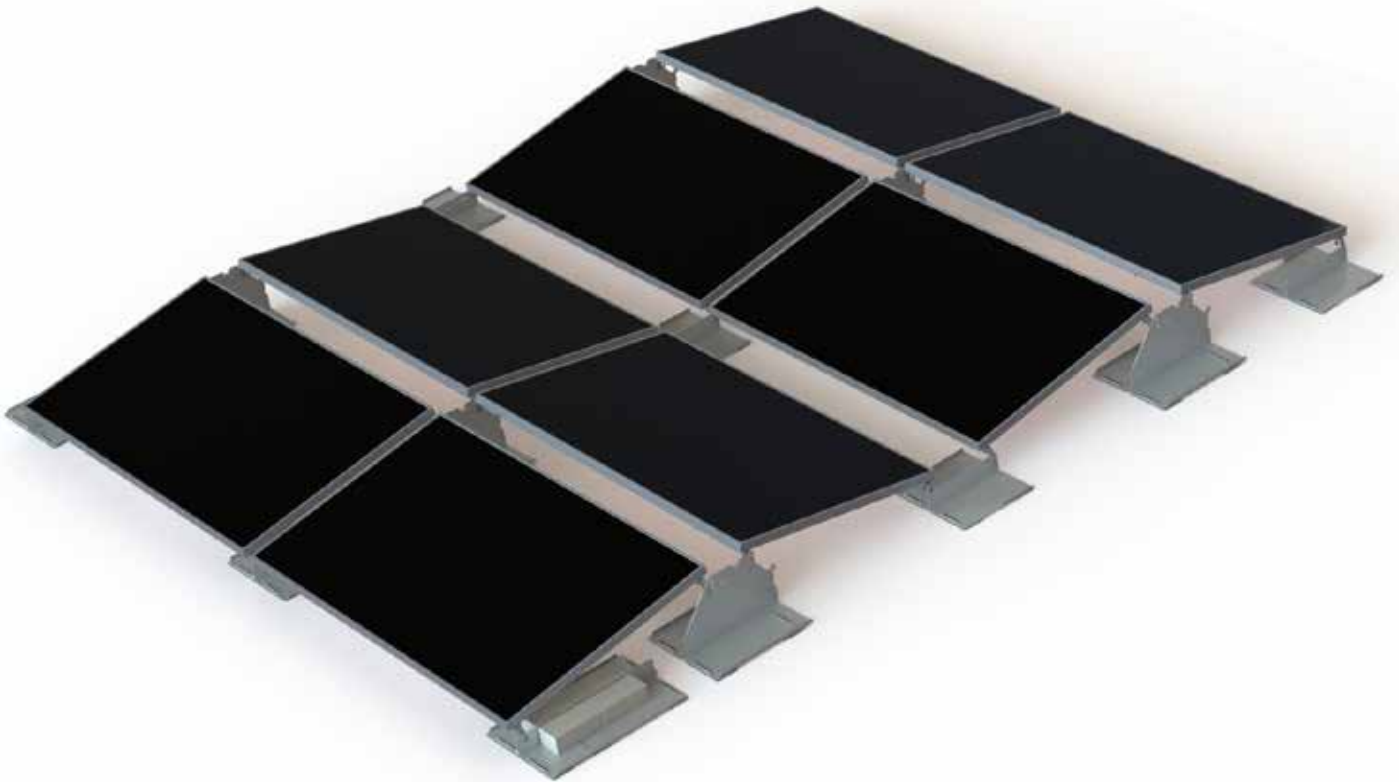




EAST **WEST TEGRA**



R3 Bourton Industrial Park, Bourton on the Water, Glos, GL54 2HQ, UK

Tel: +44 1451 824 312

Email: info@sunfixings.co.uk

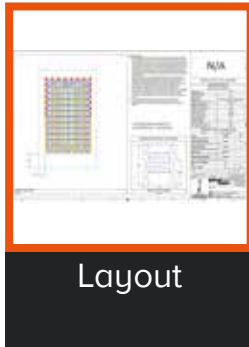
WWW.SUNFIXINGS.CO.UK

V042017

2

Reading the Layout

Tools & Items Required



Use the layout to:

1. confirm the position of the Supports
2. confirm Ballast amount on each Support
3. confirm the fixing holes on the Supports

B A L L A S T

**D I M E N S I O N S
F I X I N G H O L E S**

3

Fitting the standard Module Claw

Tools & Items Required



17mm Socket Wrench



Module



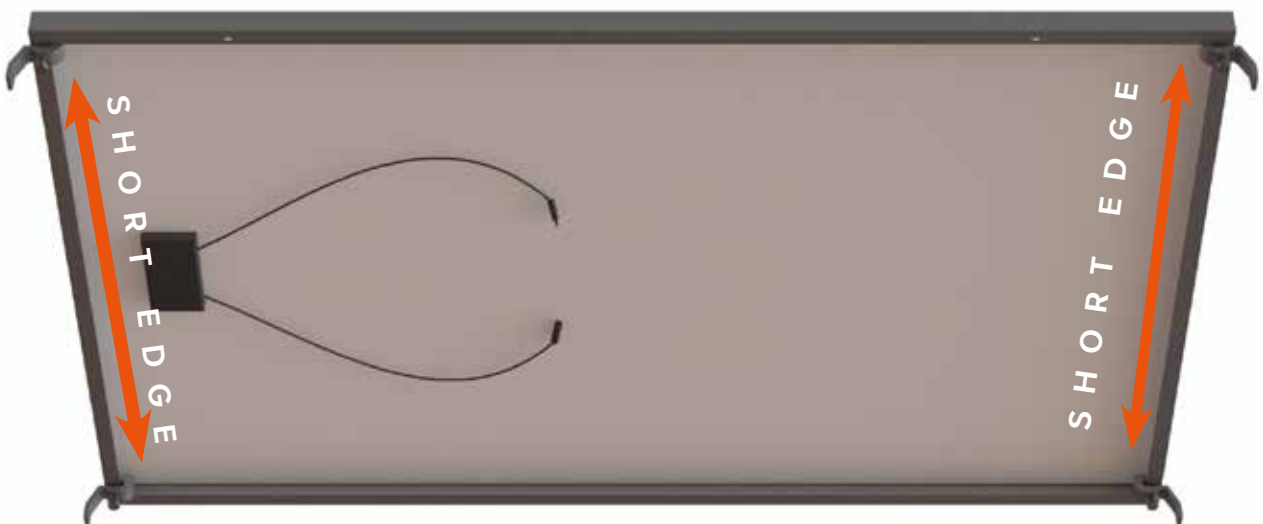
Standard Module Claw

Hook 4x Standard Module Claws onto the back of the module's frame along the short edge.

Slide each 1 into the corners of the frame.



25Nm



4

Fitting the Special Module Claw

Tools & Items Required



13mm Spanner



6mm Allen Key



Module



Special Module Claw

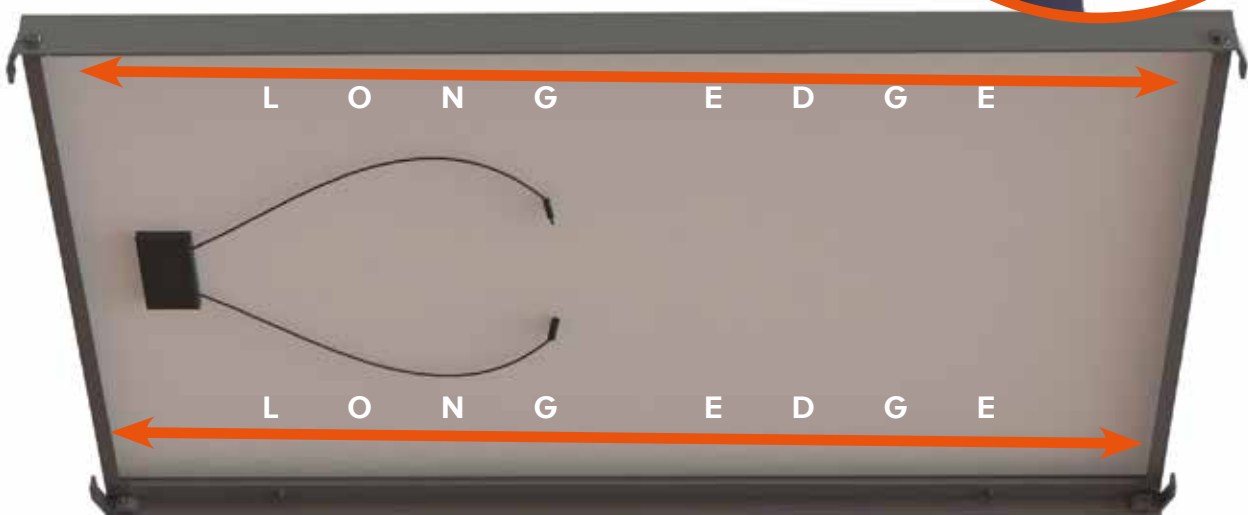
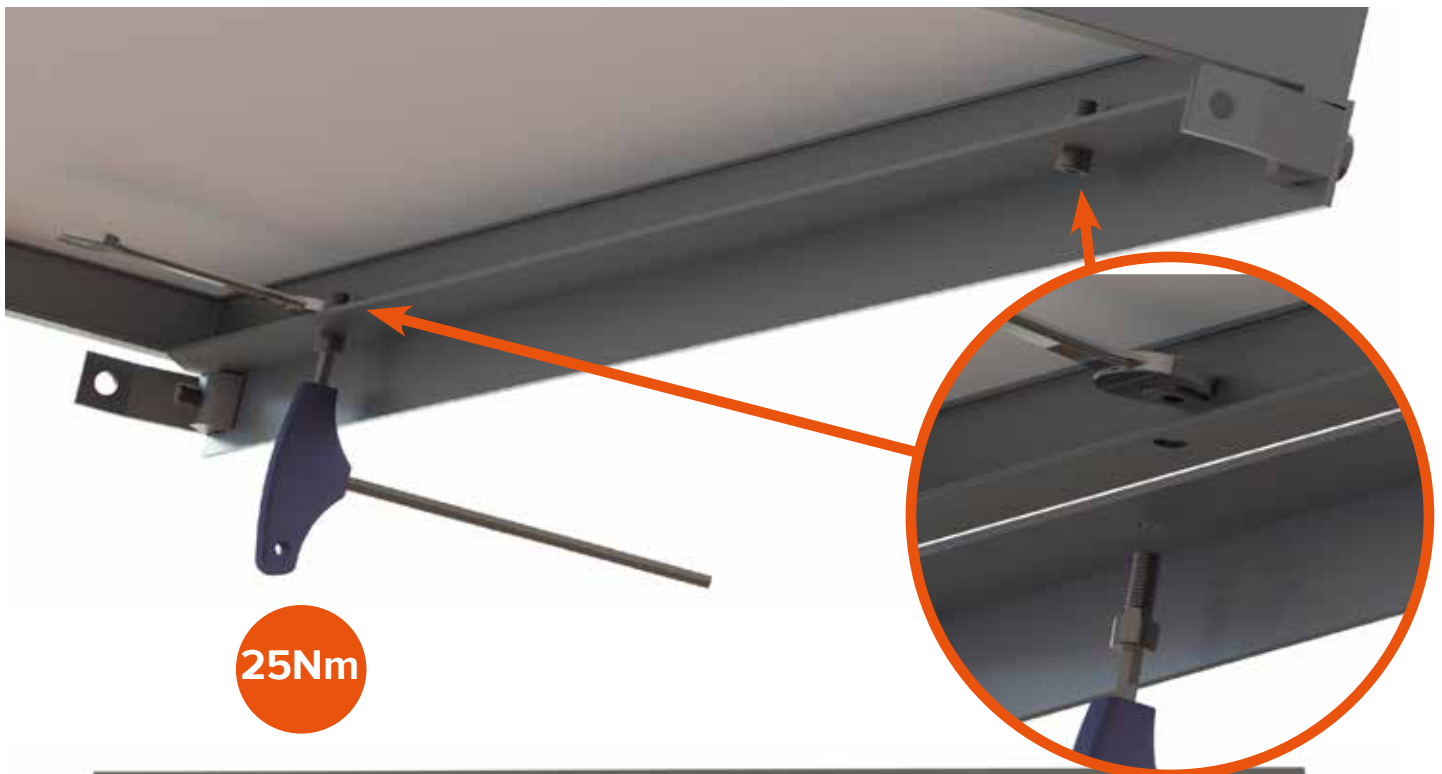


Cylinder Head Screw



Serrated Nut

Position 2x Special Module Claws on the back of the module's frame along the long edge. Push 1x Cylinder Head Screw through the fixing hole into the mounting hole of the module and secure with a Serrated Nut.



5

Assemble the Supports

Tools & Items Required

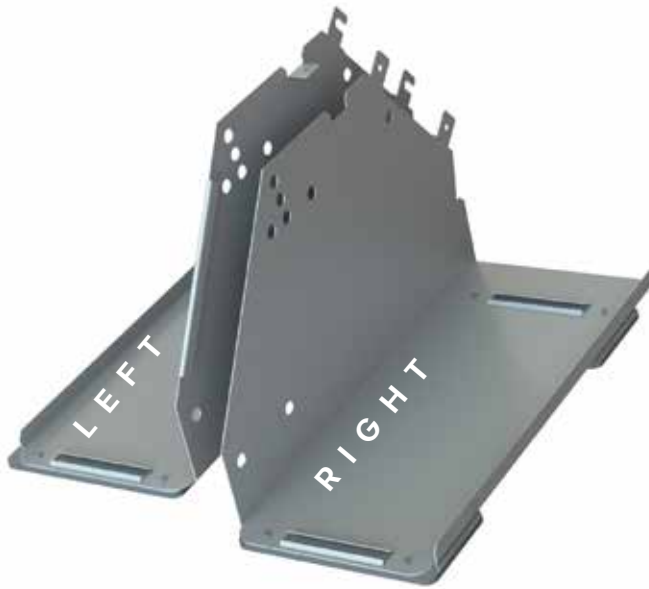


E/W Support



South Support

Twist the 2 pieces of the Support together until the slots at the top and bottom lock together.



6

Position the Supports on the roof

Tools & Items Required



Layout



Tape Measure

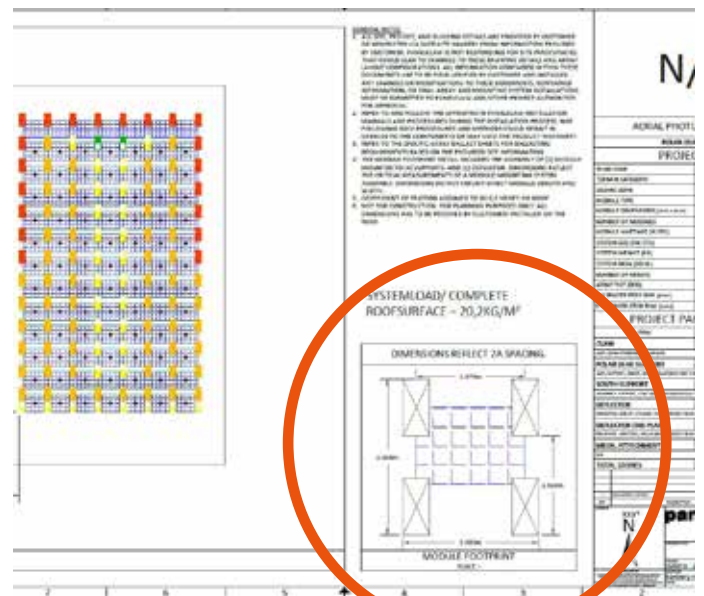
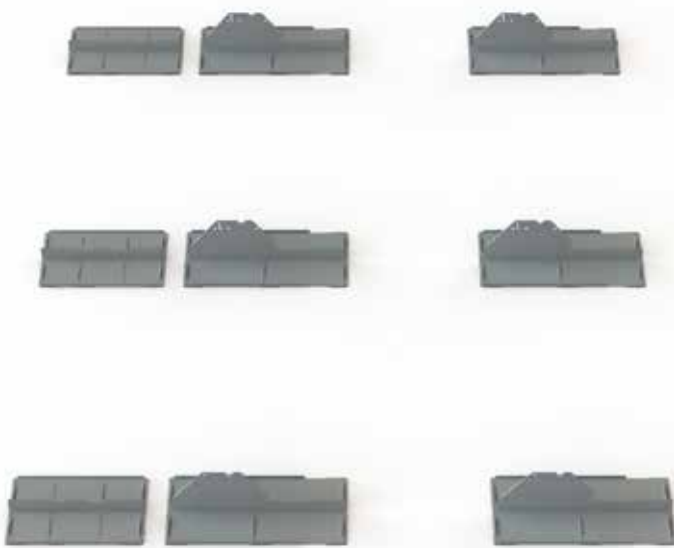


E/W Support

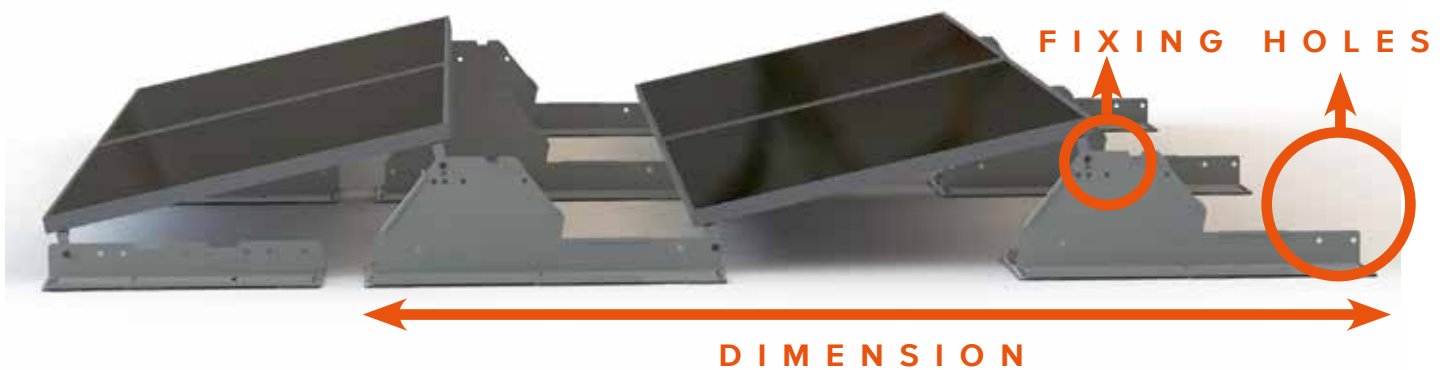


South Support

Use the layout to confirm the position of the assembled Supports across the roof.



**DIMENSIONS
FIXING HOLES**



D I M E N S I O N

7

Attaching the Module Claws to the South Supports

Tools & Items Required



17mm Spanner



15mm Socket Wrench



South Support

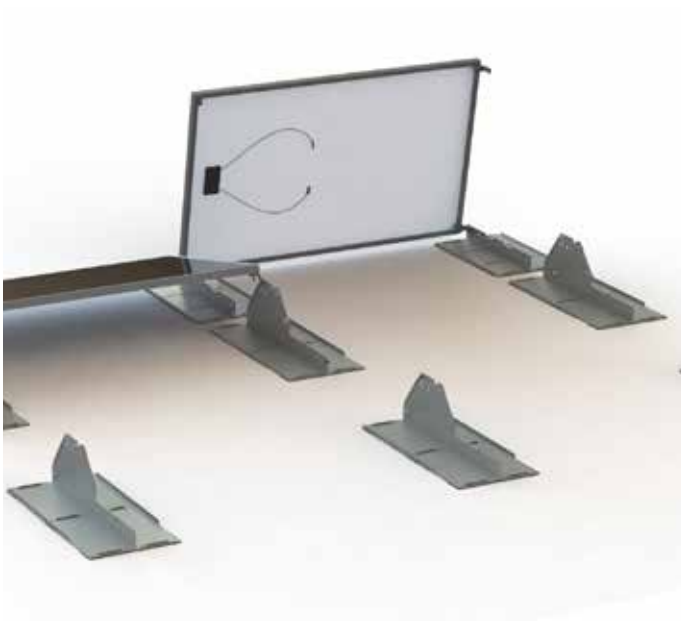


M10 x 30 Bolt



M10 Serrated Nut

Start from the left of the array. Push 1x M10 x 30 Bolt through the 1st Module Claw and into the fixing hole on the South Support. Place 2nd Module Claw onto the same M10 x 30 Bolt and secure with 1x M10 Serrated Nut.



8

Attaching the Module Claws to the E/W Supports

Tools & Items Required



17mm Spanner



15mm Socket Wrench



E/W Support



M10 x 30 Bolt



M10 Serrated Nut

Start from the left of the array. Push 1x M10 x 30 Bolt through the 1st Module Claw and into the fixing hole on the E/W Support. Place 2nd Module Claw onto the same M10 x 30 Bolt and secure with 1x M10 Serrated Nut.



9

Position the Ballast

Tools & Items Required



Layout



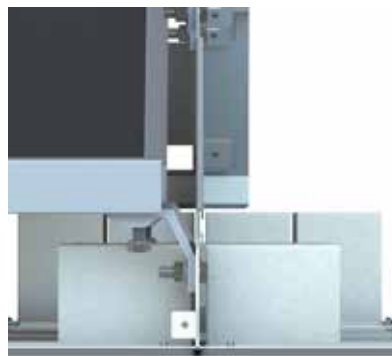
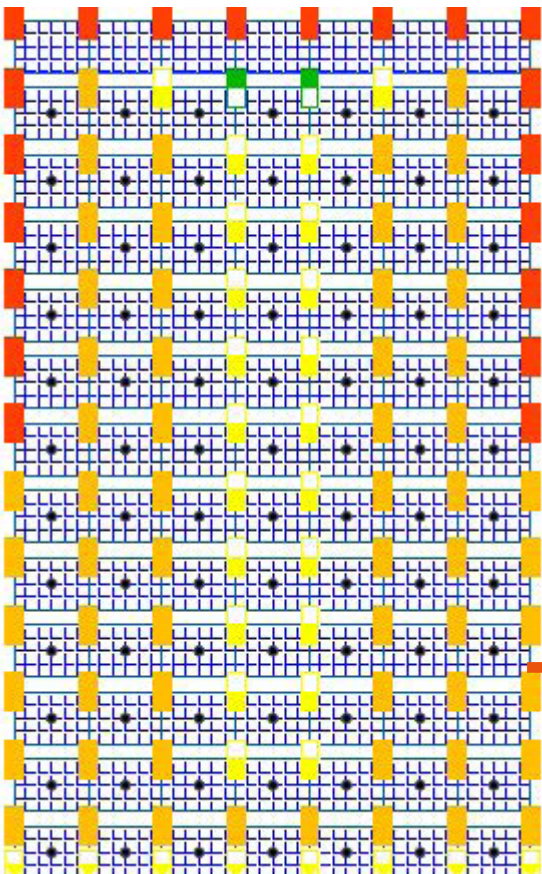
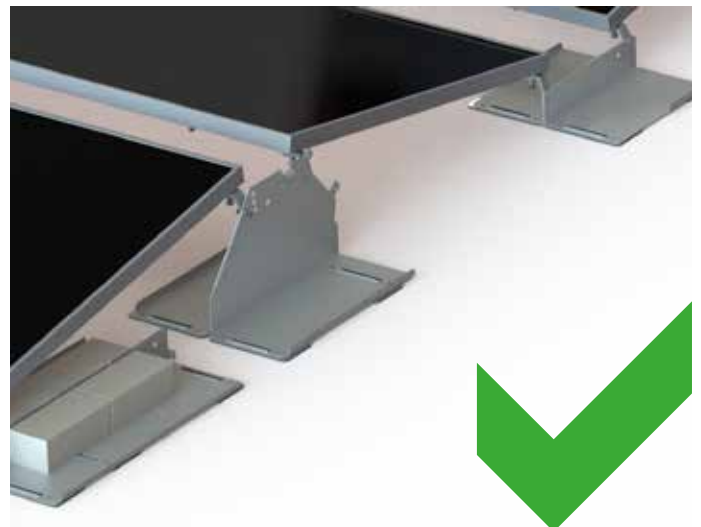
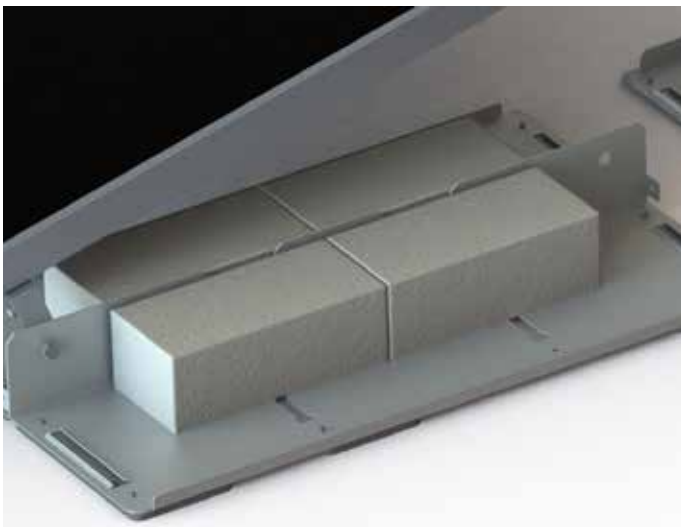
E/W Support



South Support



Ballast



				2
ONE	5-STONE	10-STONE	15-STONE	
SOUTH SUPPORTS				
				1
ONE	5-STONE	10-STONE	M.A. WITH 4-STONE	